

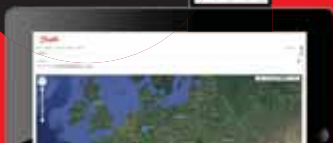
Don't let...

PRICES
STARTING FROM
20,000
Euro



wet and cold surfaces slow you down!

VIEW DATA
ON YOUR
MOBILE
DEVICES!



APPLIED TURBINE TECHNOLOGIES

Zirocco Jet Dryer and Cleaner

The Zirocco is the most effective solution for drying and cleaning surfaces at airports, on roads, bridges and other areas before the completion of crack repair/joint sealing, road/line marking, road safety tape application and asphalt paving.

The Zirocco can extend the number of operating days for your marking and surface repair equipment, which enables you to finish the work much faster and to the satisfaction of your clients.

**TAPE
MARKING
/REMOVAL**



**CONCRETE
DRYING**



**ROAD
MARKING**



**CRACK
REPAIR-FILL**



Zirocco benefits
Powerful performance

DRYING SPEED UP TO 6 km/hour

DRYING WIDTHS FROM 15-120 cm

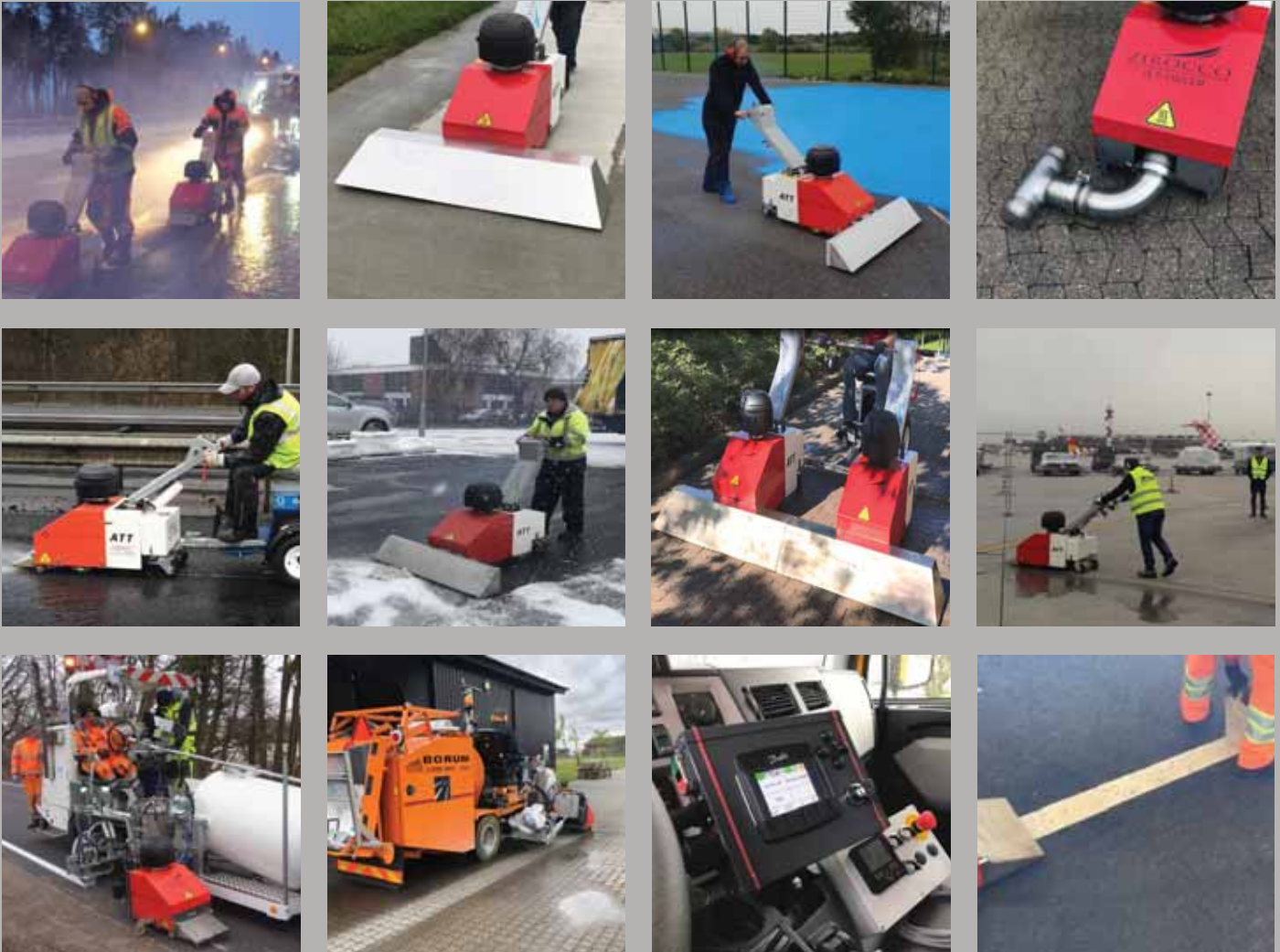
MANUAL & TRUCK MOUNTED OPTIONS

BETTER PAINT ADHESION

NON-FLAMMABLE

TELEMATICS REPORTING & DIAGNOSTICS

Zirocco applications



Telematics reporting & diagnostics



In your control:

- Locate machines and check status anytime
- Make reports for your clients and internal purposes
- Remote support service from ATT
- Turbine diagnostics



Example pages from report

The world's best gas turbines on the market with the best quality and longest lifetime. If you want the best quality and support, then choose the Zirocco Jet Dryers from ATT.



Zirocco-M100



Zirocco-M50

We offer the following jet dryers...

Data:	Zirocco-M100 - The world leading jet dryer	Zirocco-M50 - Entry level jet dryer
Turbine module:	A100 (Change to A50 turbine module is possible)	A50 (upgrade to A100 turbine module is possible)
Airflow:	100 m³ per minute	50 m³ per minute
Temperature:	App. 350-480 °C (662-896 °F)	App. 350-480 °C (662-896 °F)
Weight:	120 kg (265 lbs)/151 kg (333 lbs) w. fuel	115 kg (253 lbs)/146 kg (321 lbs) w. fuel
Drying width:	30-120 cm (12-47 inch) - delivered with 30 cm/12 inch nozzle	15-30 cm (6-12 inch) - delivered with 15 cm/6 inch nozzle
Drying speed:	Up to 6 km/h (up to 3.6 mph)	Up to 3 km/h (up to 1.8 mph)
Start-up time:	App. 60 sec	App. 15 sec
Fuel:	Standard Diesel EN 590 + 5% ATT Turbine Oil	Standard Diesel EN 590 + 5% ATT Turbine Oil
Fuel tank capacity:	31 L (8.2 US Gallons)	31 L (8.2 US Gallons)
Fuel consumption:	25-35 L/hour (7-9 US Gallons/hour)	10-15 L/hour (3-4 US Gallons/hour)
Generator:	Yes - Battery charges when using the machine	No - Frequent charging required
Towbar for Line drivers etc:	Yes	No - Accessory
Number of air filters required:	2	1
Noise level:	108 dB	96 dB
Average operation costs per hour:	72,50 EUR	31,28 EUR
End-user:	Request a quotation	20,000 EUR excl. Telematics (EXW)

We also offer rental solutions...

Contact us:

Applied Turbine Technologies

Telephone: +45 7023 6080

E-mail: info@zirocco.dk

www.zirocco.dk

Made in Denmark 

